

Pharmacists' Referrals for Monoclonal Antibody Treatment

Assessing patients for potential COVID-19 treatment with monoclonal antibodies

The Food and Drug Administration (FDA) has issued emergency use authorizations (EUA) for monoclonal antibodies for the treatment of mild to moderate COVID-19 disease. **These treatments must be administered at an infusion center within 10 days of symptom onset; pharmacists can play an important role in bringing awareness to these important treatment options.** The purpose of this resource is to provide pharmacists with information about monoclonal antibody treatments and patient eligibility so that pharmacists are prepared to make these potentially life-saving referrals.

Which monoclonal antibody treatments are authorized by the FDA?

Three monoclonal antibodies (mAb)—bamlanivimab, bamlanivimab/etesevimab, and casirivimab/imdevimab—recently received EUAs. Monoclonal antibody treatments use exogenously generated antibodies to neutralize the SARS-CoV-2 virus's ability to infect cells, which can reduce the severity of COVID-19 symptoms in patients who have confirmed COVID-19 infections. Bamlanivimab has [reportedly](#) reduced hospitalizations by up to 70%; however, because these medications must be administered by infusion, they are often overlooked and underutilized.

What is the pharmacist's role in patient access to monoclonal antibody treatments?

Pharmacists in community-based settings can help increase patient awareness of these treatment options, assess for patient eligibility, and refer patients to their provider for treatment. Pharmacists are uniquely positioned to identify patients who may benefit from these underutilized and time-sensitive treatments through point-of-care [COVID-19 testing](#), counseling, and/or clinical assessment. Pharmacists can help route patients to an appropriate provider and provide the location of an infusion clinic to initiate therapy.

How can patients access monoclonal antibodies?

Locate nearby infusion centers at: <https://protect-public.hhs.gov/pages/therapeutics-distribution>

- **Bamlanivimab:** Access the [FDA Fact Sheet for Health Care Providers](#) and the [Fact Sheet for Patients, Parents, and Caregivers \(Spanish Version\)](#).
- **Bamlanivimab/Etesevimab:** Access the [FDA Fact Sheet for Health Care Providers](#) and the [Fact Sheet for Patients, Parents, and Caregivers](#).
- **Casirivimab/Imdevimab:** Access the FDA [Fact Sheet for Health Care Providers](#) and the [Fact Sheet for Patients, Parents, and Caregivers](#).



- Positive COVID-19 test
- Symptom onset within 10 days
- High risk



Referral to a medical provider



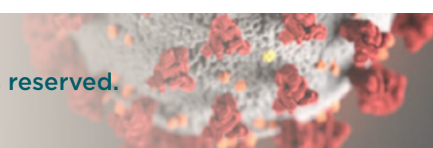
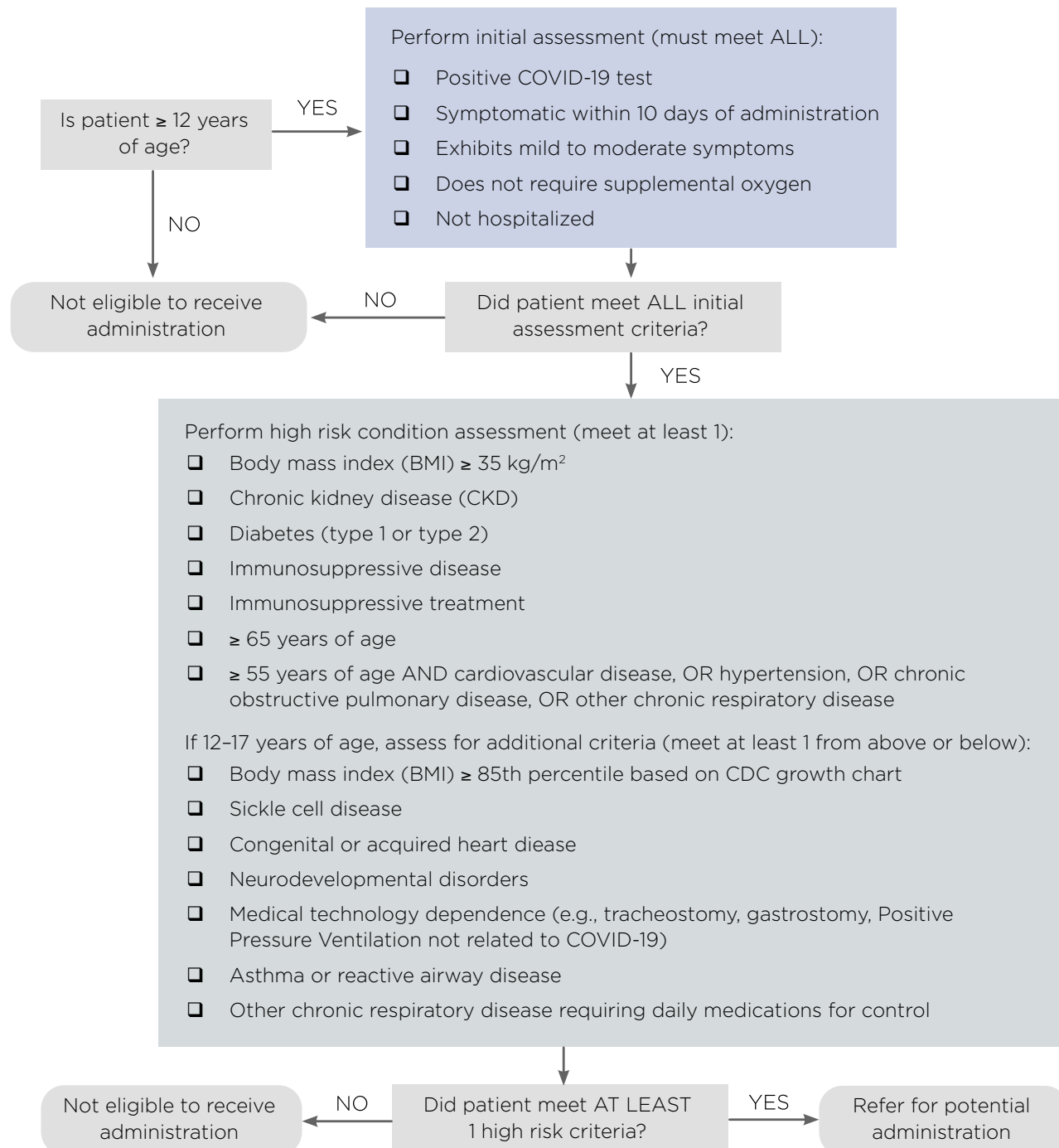
Find a nearby location for infusion services

Pharmacists' Referrals for Monoclonal Antibody Treatment (continued)



Assessing patients for potential COVID-19 treatment with monoclonal antibodies

Which patients are eligible for therapy with bamlanivimab, bamlanivimab/etesevimab, and casirivimab/imdevimab?



Pharmacists' Referrals for Monoclonal Antibody Treatment (continued)



Assessing patients for potential COVID-19 treatment with monoclonal antibodies

What are the potential side effects?

- Allergic reactions, although rare, can happen during and after infusion and should be handled in accordance with the facility's emergency action plans. Some examples of known reactions are: fever; chills; nausea; headache; shortness of breath; low or high blood pressure; rapid or slow heart rate; chest discomfort or pain; weakness; confusion; feeling tired; wheezing; swelling of lips, face, or throat; rash including hives; itching; muscle aches; dizziness; and sweating. These reactions may be severe.
- Worsening symptoms after treatment can include: fever, difficulty breathing, rapid or slow heart rate, tiredness, weakness, or confusion. If these occur, seek immediate medical attention, as some of these events require hospitalization.
- Signs and symptoms of infusion-related reactions include: fever, chills, nausea, headache, bronchospasm, hypotension, angioedema, throat irritation, rash including urticaria, pruritus, myalgia, and dizziness.

How should side effects be reported with bamlanivimab, bamlanivimab/etesevimab, and casirivimab/imdevimab?

Report side effects to FDA MedWatch at www.fda.gov/medwatch or call 1-800-FDA-1088 or 1-844-734-6643.

Are these treatments safe for pregnant or breastfeeding patients?

There is limited experience treating pregnant women or breastfeeding mothers with bamlanivimab and casirivimab/imdevimab. For a mother and unborn baby, the benefit of receiving these monoclonal antibodies may be greater than the risk from the treatment; discuss options with the patient.

What are some additional patient counseling points?

It is important to note that bamlanivimab, bamlanivimab/etesevimab, and casirivimab/imdevimab are not cures. Patients should continue to self-isolate and use infection control measures (e.g., wear mask, isolate, social distance, avoid sharing personal items, clean and disinfect "high touch" surfaces, and wash hands frequently) and, in general, continue to adhere to [CDC guidelines](#) unless or until cleared by a provider.

For more information about monoclonal antibody treatments and other COVID-19 therapeutics, review "Medications Being Studied for COVID-19" in APhA's [COVID-19 Resources: Know the Facts library](#).

Disclaimer: The information in this document is provided only for general informational purposes and does not constitute business or legal advice. Information related to the COVID-19 pandemic is changing rapidly and continuously. The material and information contained in this publication is believed to be current as of the date included on this document. The American Pharmacists Association assumes no responsibility for the accuracy, timeliness, errors, or omission contained herein. Links to any sources do not constitute any endorsement of, validity, or warranty of the information contained on any site. The user of these materials should not under any circumstances solely rely on, or act based on this publication. Pharmacy professionals retain the responsibility for using their own professional judgment and practicing in accordance with all rules, regulations, and laws governing the pharmacy practice within their jurisdiction.

